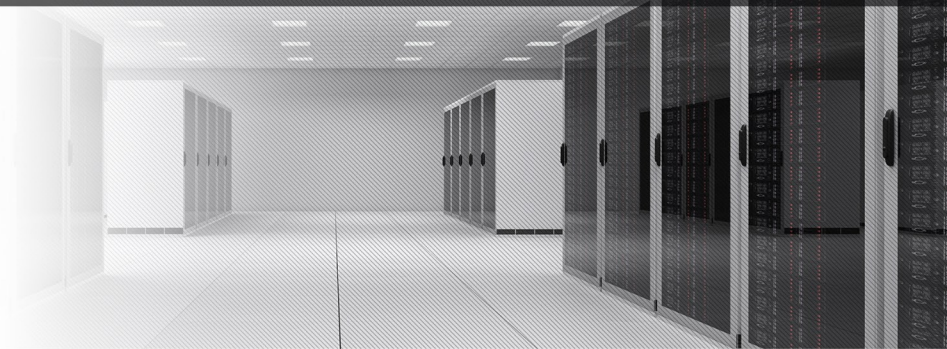
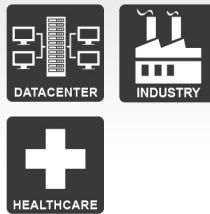


VisionMod Subrack 19"

10-90 kVA/kW (3/3) (3/1) (1/1)



Applications



Advantages

The rack modular, scalable, hot-swappable, online double conversion UPS ranging from 10 to 90kVA/kW, with its flexible configuration of 3/3, 3/1 and 1/1, and its compact structure, is the ideal choice for small and medium data centers. 7" color touch screen LCD with integrated bypass.

Specifications



- **Rack modular design**
Modular design, compatible with 19" standard rack cabinet, convenient to be integrated with servers.
- **3 level technology**
Very high efficiency
Normal mode AC-AC: 94,5% max.
Eco mode: 99%
- **High power density**
10/15 kVA/kW power module in 2U height, saving much space, easy for capacity expansion.
- **Integrated solution for data centers**
The UPS can be integrated with battery cabinet, PDU and external maintenance bypass, offering an excellent choice for data centers.
- **Adjustable battery voltage**
384-528VDC (32-44x12VDC batteries).
- **Smart sleep function**
System can intelligently shutdown some power modules to increase the total load rate, achieving higher efficiency.

Power modules

1 to 6 power modules can be connected according to the subrack dimensions.

Battery module

Hot swap battery module

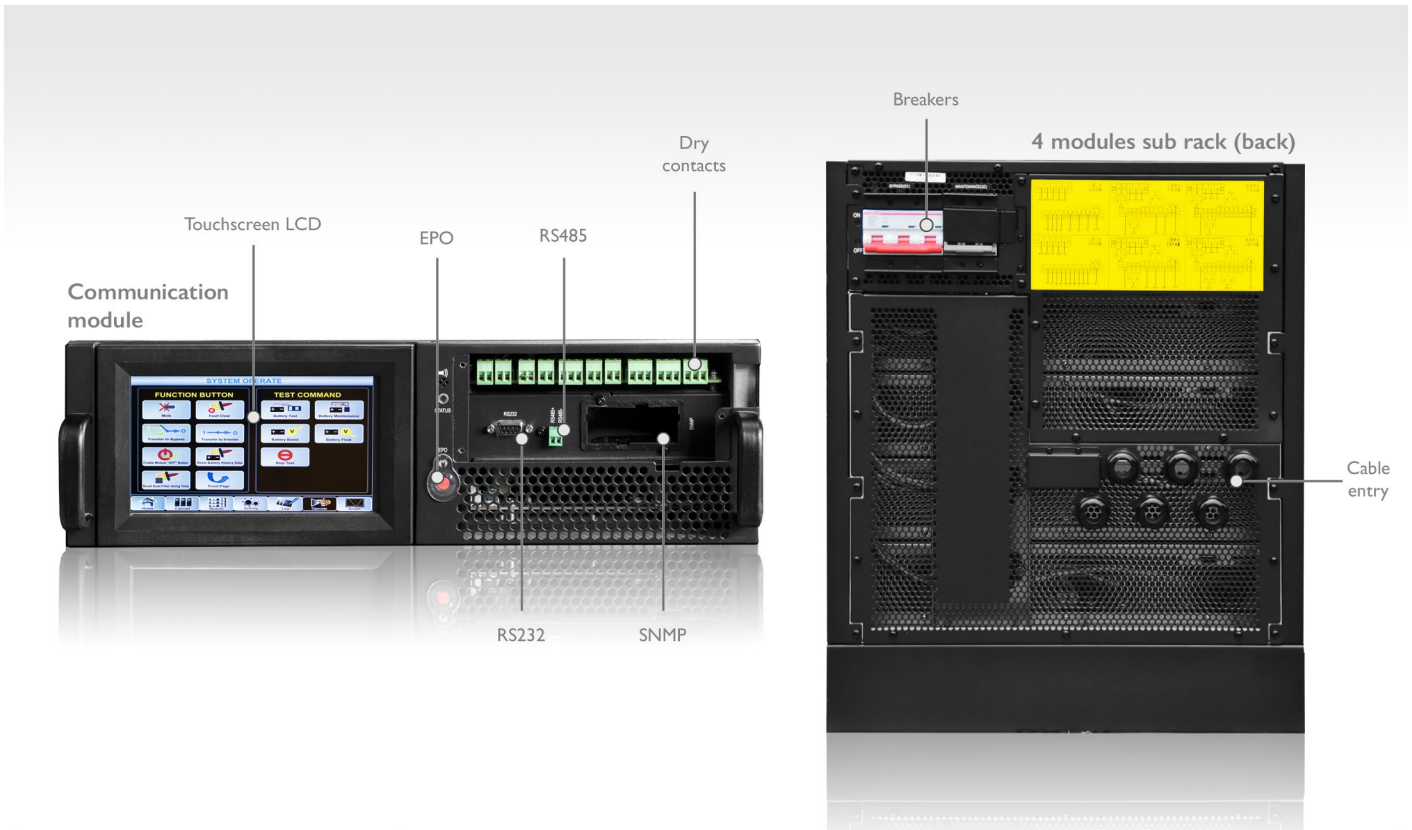


Standard battery module



Example 19" rack cabinet with standard battery module





VisionMod Subrack 19''	Model				
	VM20	VM40	VM45	VM60	VM90
Subrack capacity	30kVA/kW	40kVA/kW	45kVA/kW	60kVA/kW	90kVA/kW
Power module	2x15kVA/kW	4x10kVA/kW	3x10 or 3x15kVA/kW	4x15kVA/kW	6x10 or 6x15kVA/kW
— Input					
Phase	3P+N+G (380/400/415Vac) or 1P+N+G (220/230/240Vac)				
Voltage range (3-phase)	304-478Vac (phase-phase) at 100% load; 228-478Vac at 80% load				
Voltage range (1-phase)	176-276Vac (phase-neutral) at 100% load; 132-276Vac at 80% load				
Frequency range	40-70Hz				
Power factor	>0.99				
THDi	THDi<4% @ 100% linear load				
— Output					
Voltage	3-phase+N+G: 380/400/415Vac or selectable 1-phase: 220/230/240Vac				
Voltage regulation	1.5%				
Power factor	1.0				
THDu	THD<1% (linear load), THD<5.5% (non-linear load)				
Crest factor	3:1				
Overload capability	110% for 1 hour; 125% for 10 min; 150% for 1 min; >150% for 200 ms				
— Battery					
Voltage	384-528VDC (32-44 x12VDC batteries)				
Charge power	20% of the system power				
— System					
System efficiency	Normal mode 95%; ECO mode 98%; battery mode 94.5%				
Display	7.0" color touch screen LCD + LED + keyboard				
IP Class	IP20				
Interface	Standard: RS232, RS485, dry contact. Optional: SNMP				
Operation/storage temperature	0-40°C/-25-70°C				
Relative humidity	0-95% (non-condensing)				
Noise	56dB @ 50% load at 1 meter				
— Physical					
Subrack dimensions WxDxH, mm	485x697x398(7U)	485x697x575(11U)	485x751x575(11U)	485x751x1033(22U)	485x751x1033(22U)
Subrack weight	42kg	51kg	57kg	70kg	85kg
Power module dimensions	436x590x855(2U)				
Battery modules	40x9Ah, WxDxH 440x800x174 (4U), fixed or hot swap (optional external battery)				
— Standards					
Certificates	IEC62040-1-1, IEC/EN62040-2, IEC62040-3, IEC/EN60950-1				

ON-LINE